

THE HARBORSIDE

STANDARD FLOORPLAN

3 Bedrooms / 2 Baths

(Floorplan Shown in Block Version)

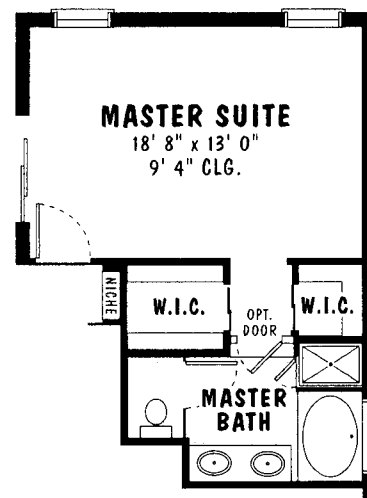
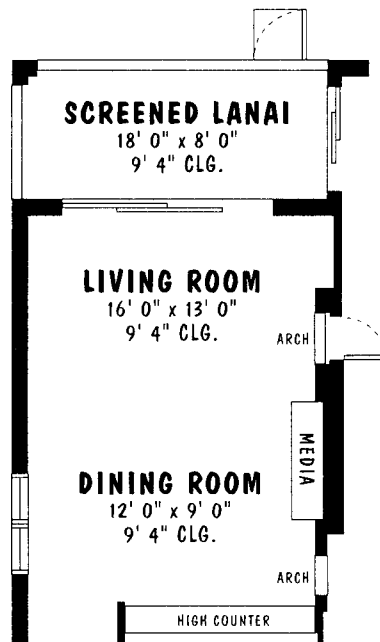
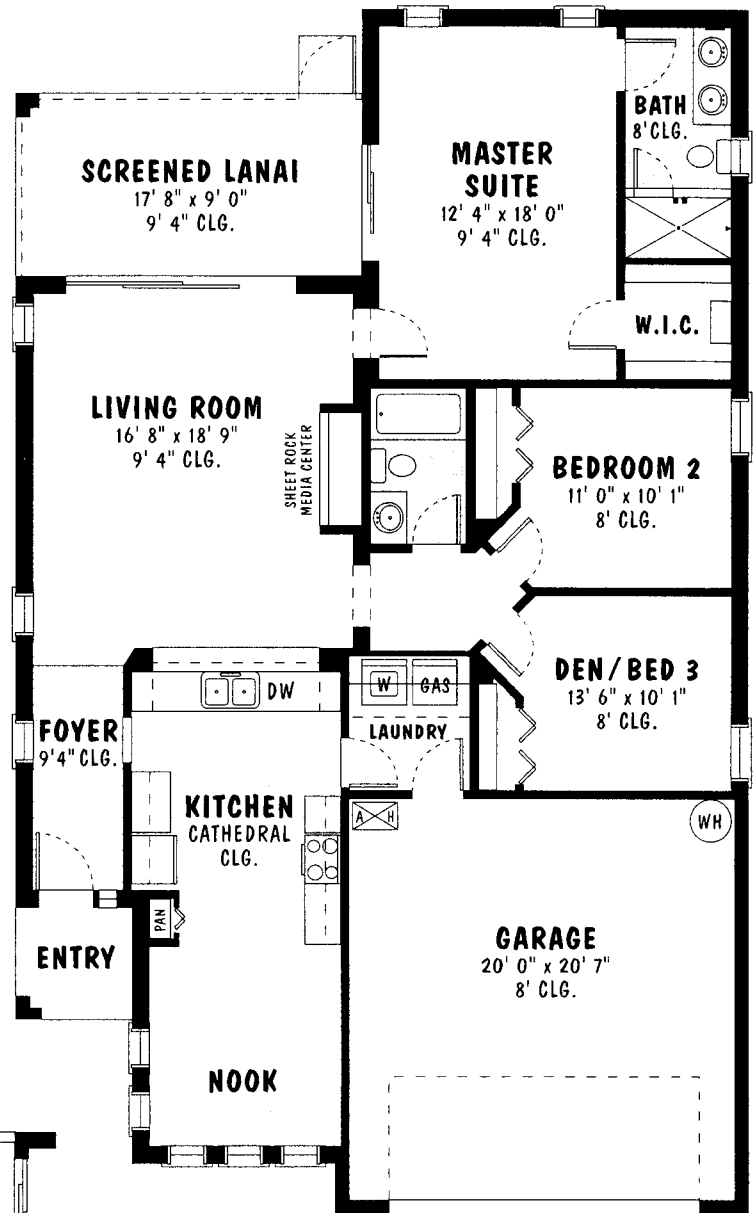
Block: Living Area 1522 sq. ft • Total Area 2164 sq. ft.

Designed to meet the needs of an active lifestyle, the Harborside offers plenty of style and space for entertaining. It also offers some intimate features that are designed to make your "personal days" feel special. You will find things like a spacious Screened Lanai and a private Morning Room that can serve as a Breakfast Nook or a separate Family Room. The Morning Room is especially inviting with its Columned Entryway and a unique Volume Ceiling.

The Living Room area includes a Built-In Media Center, 9' 4" Ceilings and Custom Wall Treatments. A convenient Laundry Room is adjacent to the Kitchen, which includes a large Breakfast Bar that opens to the Great Room. By choosing the optional 2 Bedroom design, you can create a Deluxe Master Suite with two Walk-In Closets and a luxurious Master Bath.

HIGHLIGHTS

- 2 Bedroom / Den or 3 Bedroom Split Plan with 2 Baths
- Expansive Great Room and Screened Lanai
- Distinctive Morning Room or Family Room
- Built-In Media Center in Great Room
- 9' 4" Ceilings in Living Areas and Master Suite
- Optional 2 Bedroom Plan with Deluxe Master Suite
- 2 Car Garage and Air Conditioned Laundry Room



**OPTIONAL
DELUXE
MASTER BATH**

Pringle Development • So. Hwy. 27, 26600 Ace Ave., Leesburg, FL 34748 • 1 (800) 325-4471 • (352) 365-2303 • www.pringle.com
Pringle Construction Company: CG C056993 Builder of custom homes at Riverside, Scottish Highlands, Highland Lakes, Royal Highlands, Royal Harbor and other fine communities.

Because we continually strive to find new ways to improve and change our homes, we reserve the right to change specifications, brands, and architectural details without notice. Dimensions may also vary from those shown in this sales literature and some features depicted may not be included as standard when you buy your home.

